



SIMPLE LIFE



SIMPLE LIFE



Galopin Drive, Doncaster, DN4

£1,100 PCM

Welcome to Pullman Green, a gorgeous development offering a mix of 2, 3 & 4 bedroom homes.

The welcoming central hallway of the Grantham sits in between the living room and the kitchen. A house designed with you in mind, the spacious lounge provides the perfect area to relax, whilst the dining/kitchen area provides a great place to spend time and entertain with its French windows opening on to the garden. A WC is conveniently situated off the hallway, completing the downstairs.

Upstairs, the house has a large master bedroom with fitted, mirrored wardrobes, and a further two bedrooms. A stylish family bathroom with a separate bath and shower provides the best of both worlds, whilst a storeroom on the landing provides a space to store bits and pieces.

With Doncaster train station just a 10 minute walk away, this site boasts excellent transport links providing direct services to London, Manchester and Edinburgh plus many more. You'll be extremely well connected with the A1 less than 2 miles away to take you North & South of the region.

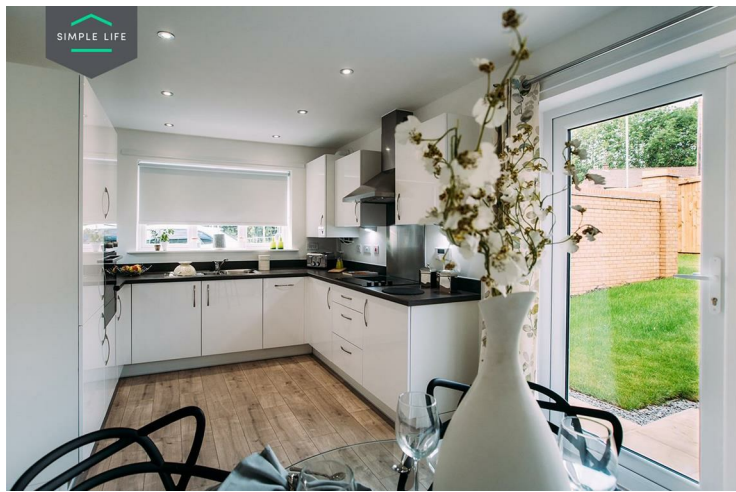
Doncaster City centre includes a range of high street and independent retailers including The Frenchgate shopping centre featuring a new cinema and restaurant complex. The area of Hexthorpe benefits from an array of local independent cafes and restaurants as well as leisure facilities to suit all the family.

Your education needs will be well catered for with 9 well respected schools within 2 miles of Pullman Green.

To access the site use the postcode DN4 0BE via Flowitt Street.

Deposit: £1260
Unfurnished
Council Tax: B
Available 3rd December 2025





Key Features

- Car Parking Space
- Dishwasher
- Washing/drying machine
- Carpets up the stairs and in the bedrooms
- Blinds in the bedrooms
- Security Alarm
- Fridge-freezer
- Modern kitchen worktops and units
- Private back garden
- Electric car charging point ready

Location

